

29 Greenlands Rd

Redcar, England

Google, Inc.

Street View - Jul 2016

Crime in My Area – Greenlands Road, Redcar

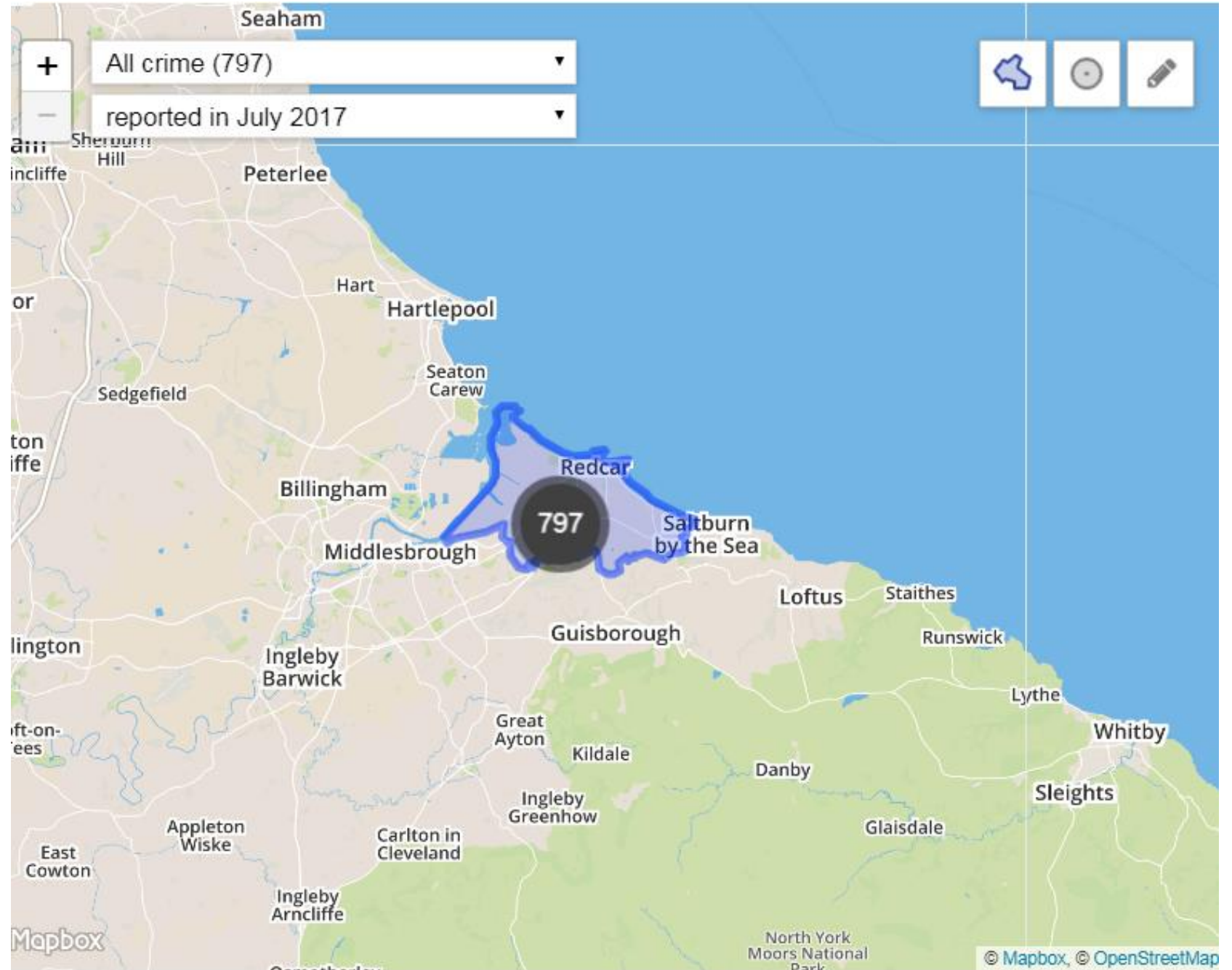


**I live on Greenlands Road in Redcar, North Yorkshire.**

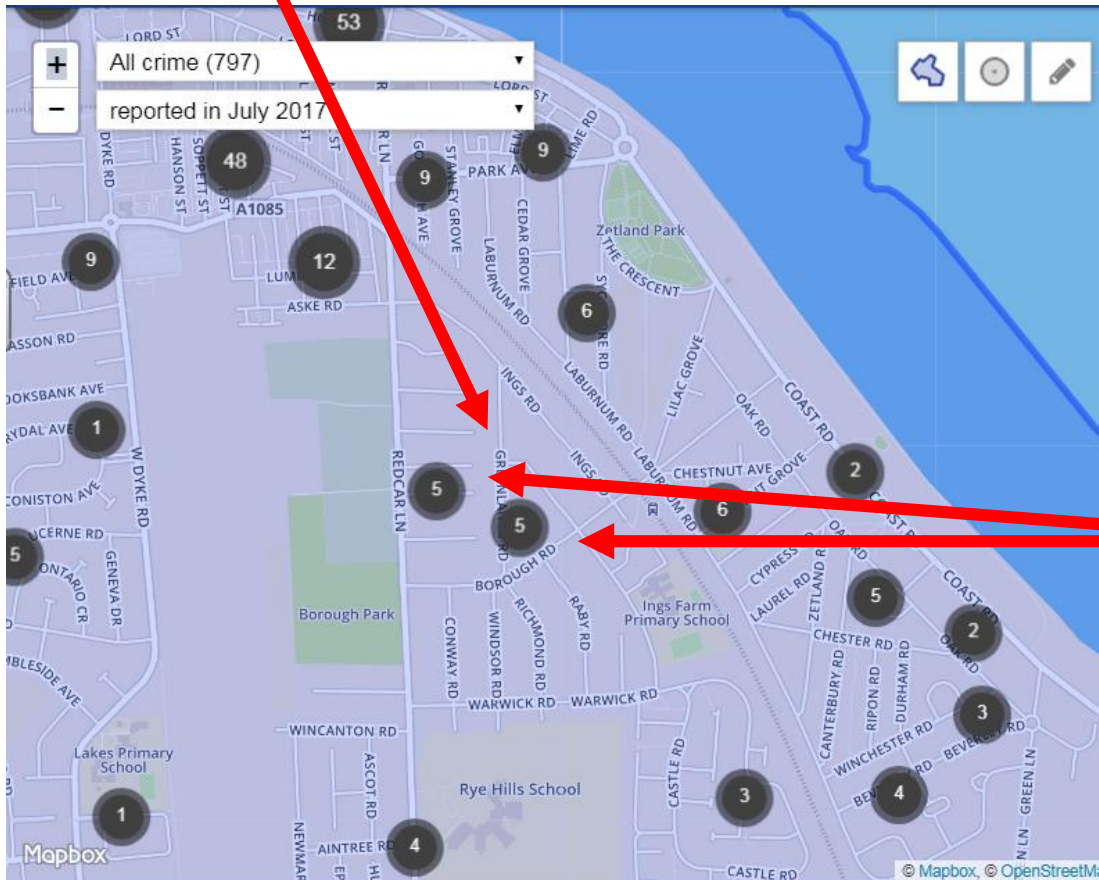
**Greenlands Road is just to the north east of Rye Hills Academy.**

**In July of this year, there were 797 recorded crimes in the whole of the Redcar area.**

**11 of these crimes were on or near my street.**



I live on  
Greenlands Road  
in Redcar East.



These 11 crimes were  
for a number of  
different activities.

Unfortunately, the most  
common from of crime  
was violent and sexual  
assault.

There were  
11 recorded  
crimes in  
my area in  
July 2017.

Type of Crime	Frequency
Bicycle theft	I (1)
Violent and sexual offence	##### (5)
Anti social behaviour	IIII (4)
Other theft	I (1)
Total recorded crimes	##### I(11)

Type of Crime	Frequency
Bicycle theft	I (1)
Violent and sexual offence	##### (5)
Anti social behaviour	IIII (4)
Other theft	I (1)
Total recorded crimes	##### ##### I(11)

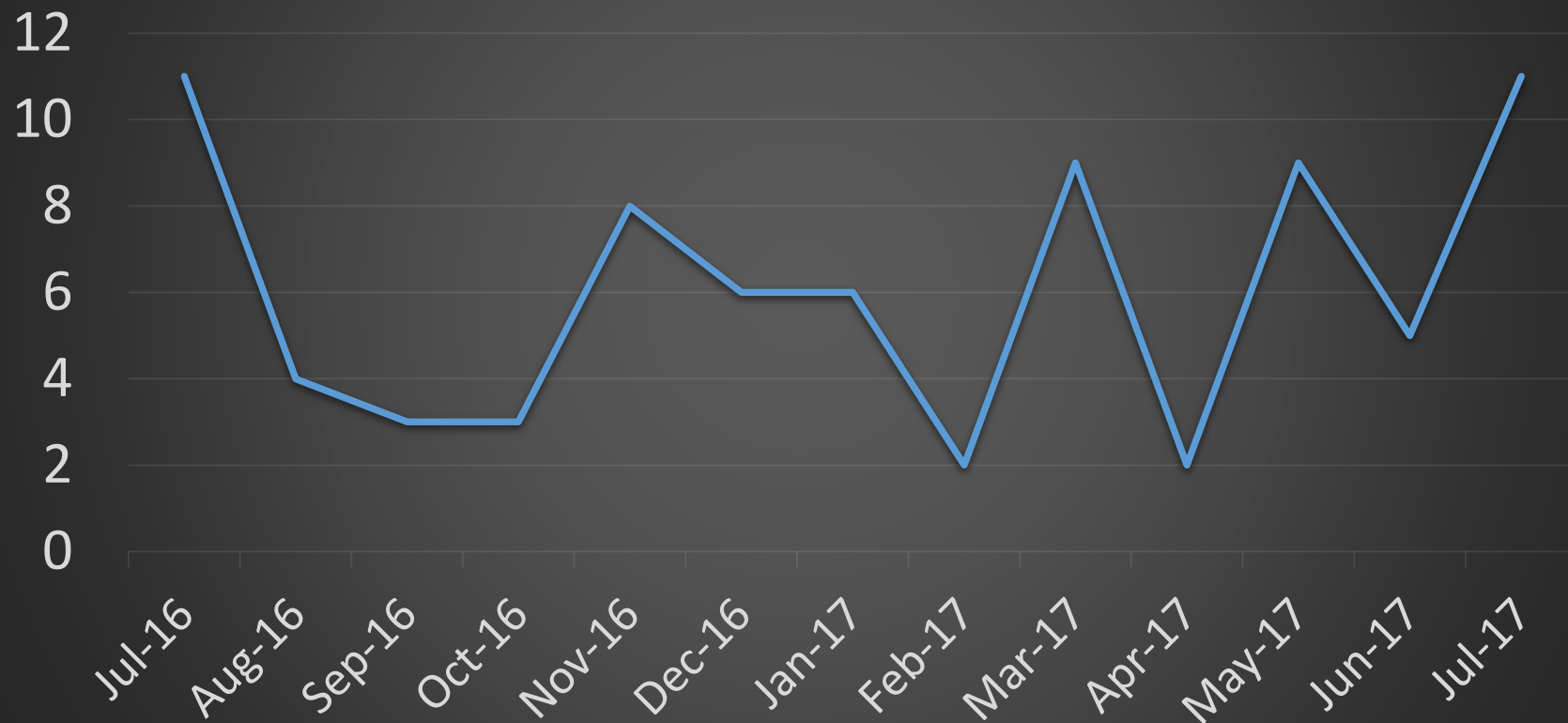
A bar chart showing the number of different crimes in July 2017 in my area.



I wonder if crime has increased in my area over the last year (years).

The number of crimes in my area has fluctuated over the last year.

A line graph showing the number of crimes in my area over the last year.



The crime rate was highest in July 2016 and July 2017 at 11.

The crime rate was lowest in February and April 2017 at 2.

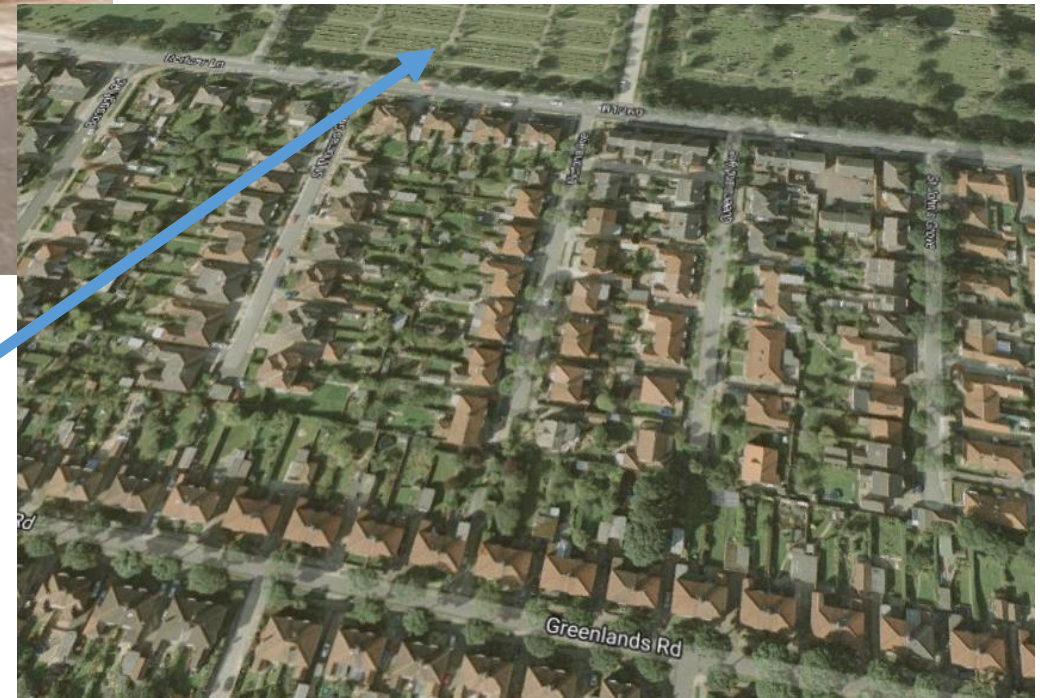
**Extension Task – produce a line graph for the last 3 years and add a line of best fit. Is crime increasing in the area?**





Do the trees block the view and allow people to be more clandestine or secretive?

Are the park areas used by students on holiday in the late evenings?



Victoria Avenue has high rates of anti social behaviour in July. Why? Annotate your local area photo with at least 4 annotations.





What could we do to reduce anti-social behaviour in the area? Visit the website below and record at least 4 pieces of advice relevant to your local area.

[Police Advice ASB](#)



## Homework / Reflections

You have been using GIS which is data linked to specific locations. Come up with some advantages and disadvantages of using the crime data website. Make a table like the one below and populate it with at least two advantages and two disadvantages. Give examples from your research.

Advantages	Disadvantages
It is very easy to compare areas as the number of crimes is recorded by area and date. My line graph shows change over time.	Some crimes have been grouped together such as violent or sexual abuse. These are two different crimes.



## Homework / Reflections

You have been using GIS which is data linked to specific locations. Come up with some advantages and disadvantages of using the crime data website. Make a table like the one below and populate it with at least two advantages and two disadvantages. Give examples from your research.

Advantages	Disadvantages
It is very easy to compare areas as the number of crimes is recorded by area and date. My line graph shows change over time.	Some crimes have been grouped together such as violent or sexual abuse. These are two different crimes.

## Homework / Reflections

You have been using GIS which is data linked to specific locations. Come up with some advantages and disadvantages of using the crime data website. Make a table like the one below and populate it with at least two advantages and two disadvantages. Give examples from your research.

Advantages	Disadvantages
It is very easy to compare areas as the number of crimes is recorded by area and date. My line graph shows change over time.	Some crimes have been grouped together such as violent or sexual abuse. These are two different crimes.



## Homework / Reflections

You have been using GIS which is data linked to specific locations. Come up with some advantages and disadvantages of using the crime data website. Make a table like the one below and populate it with at least two advantages and two disadvantages. Give examples from your research.

Advantages	Disadvantages
It is very easy to compare areas as the number of crimes is recorded by area and date. My line graph shows change over time.	Some crimes have been grouped together such as violent or sexual abuse. These are two different crimes.

## Homework / Reflections

You have been using GIS which is data linked to specific locations. Come up with some advantages and disadvantages of using the crime data website. Make a table like the one below and populate it with at least two advantages and two disadvantages. Give examples from your research.

Advantages	Disadvantages
It is very easy to compare areas as the number of crimes is recorded by area and date. My line graph shows change over time.	Some crimes have been grouped together such as violent or sexual abuse. These are two different crimes.



## Homework / Reflections

You have been using GIS which is data linked to specific locations. Come up with some advantages and disadvantages of using the crime data website. Make a table like the one below and populate it with at least two advantages and two disadvantages. Give examples from your research.

Advantages	Disadvantages
It is very easy to compare areas as the number of crimes is recorded by area and date. My line graph shows change over time.	Some crimes have been grouped together such as violent or sexual abuse. These are two different crimes.